



Clearwater III



Coastal



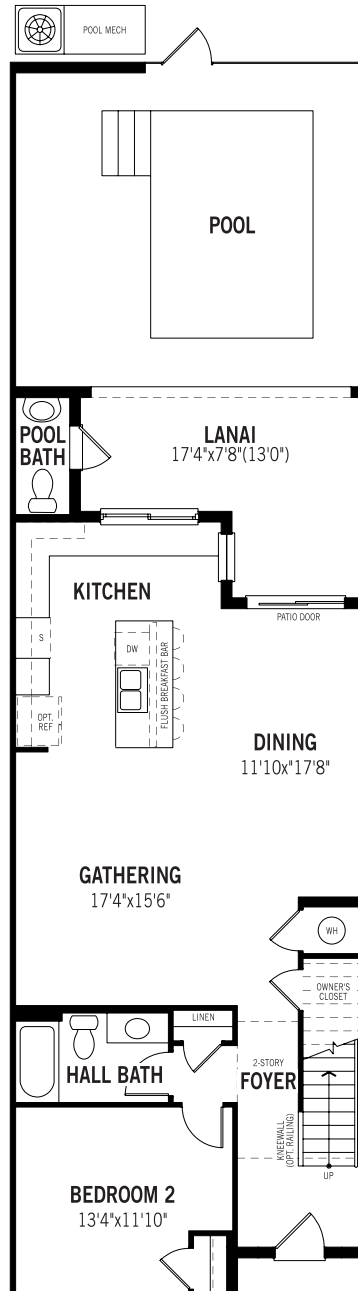
Modern

Printed on 8/30/23

Plans and elevations are artist's renderings and may contain options which are not standard on all models. Mattamy Homes reserves the right to make changes to these floorplans, specifications, dimensions and elevations without prior notice. Stated dimensions and square footage are approximate and should not be used as representation of the home's precise or actual size. Square footage of single family homes is generally based upon ANSI Z765-2003 but may vary from time to time and without notice. Square footage of multi-family homes are generally based upon ANSI BOMA Z65.1-1996 but may vary from time to time and without notice.



Clearwater III – First Floor



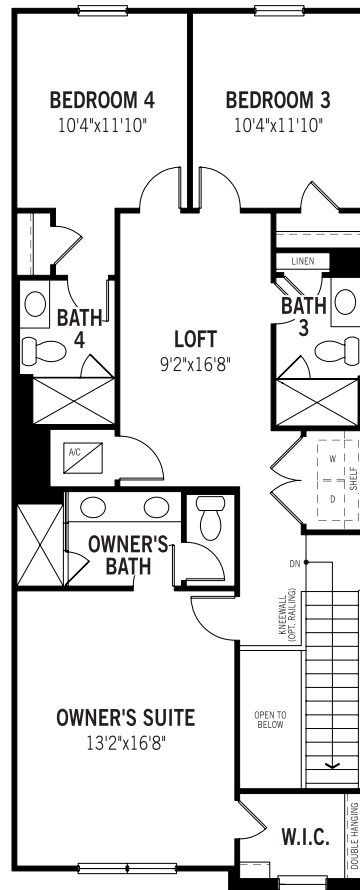
Unselected Options: End Wall

Printed on 8/30/23

Plans and elevations are artist's renderings and may contain options which are not standard on all models. Mattamy Homes reserves the right to make changes to these floorplans, specifications, dimensions and elevations without prior notice. Stated dimensions and square footage are approximate and should not be used as representation of the home's precise or actual size. Square footage of single family homes is generally based upon ANSI Z765-2003 but may vary from time to time and without notice. Square footage of multi-family homes are generally based upon ANSI BOMA Z65.1-1996 but may vary from time to time and without notice.



Clearwater III – Second Floor



Unselected Options: End Wall

Printed on 8/30/23

Plans and elevations are artist's renderings and may contain options which are not standard on all models. Mattamy Homes reserves the right to make changes to these floorplans, specifications, dimensions and elevations without prior notice. Stated dimensions and square footage are approximate and should not be used as representation of the home's precise or actual size. Square footage of single family homes is generally based upon ANSI Z765-2003 but may vary from time to time and without notice. Square footage of multi-family homes are generally based upon ANSI BOMA Z65.1-1996 but may vary from time to time and without notice.



Del Ray III



Coastal



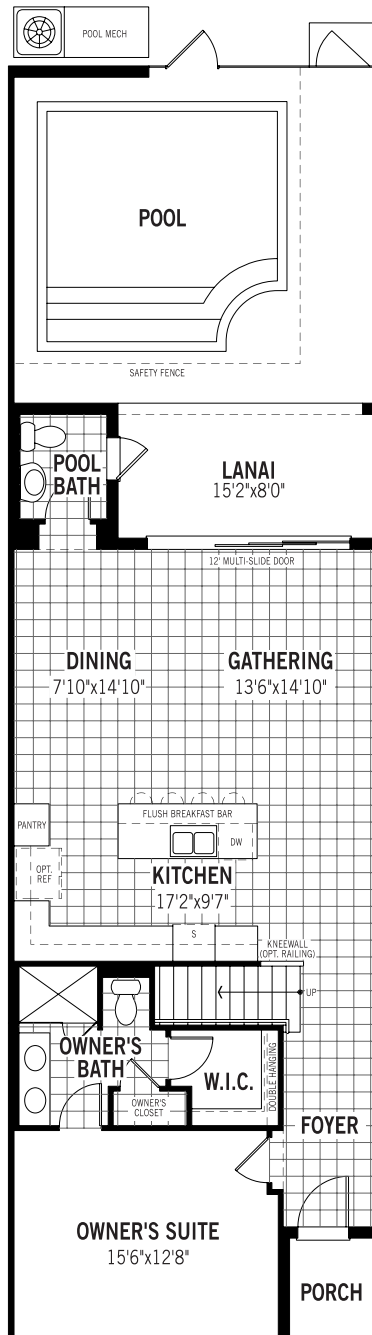
Modern

Printed on 8/30/23

Plans and elevations are artist's renderings and may contain options which are not standard on all models. Mattamy Homes reserves the right to make changes to these floorplans, specifications, dimensions and elevations without prior notice. Stated dimensions and square footage are approximate and should not be used as representation of the home's precise or actual size. Square footage of single family homes is generally based upon ANSI Z765-2003 but may vary from time to time and without notice. Square footage of multi-family homes are generally based upon ANSI BOMA Z65.1-1996 but may vary from time to time and without notice.



Del Ray III – First Floor

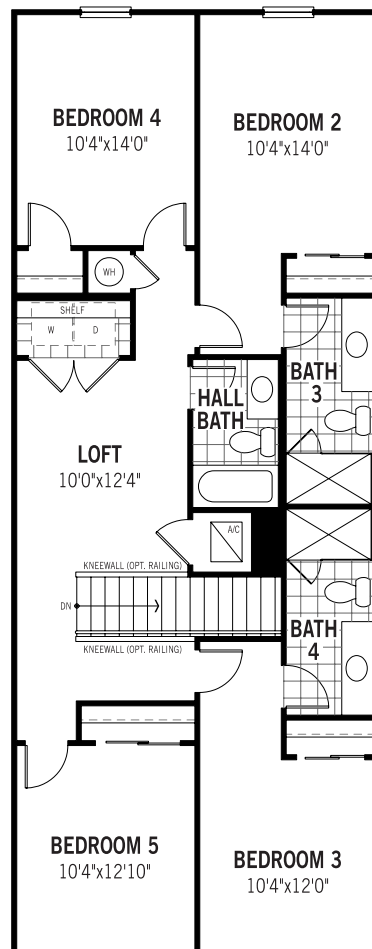


Printed on 8/30/23

Plans and elevations are artist's renderings and may contain options which are not standard on all models. Mattamy Homes reserves the right to make changes to these floorplans, specifications, dimensions and elevations without prior notice. Stated dimensions and square footage are approximate and should not be used as representation of the home's precise or actual size. Square footage of single family homes is generally based upon ANSI Z765-2003 but may vary from time to time and without notice. Square footage of multi-family homes are generally based upon ANSI BOMA Z65.1-1996 but may vary from time to time and without notice.



Del Ray III – Second Floor



Printed on 8/30/23

Plans and elevations are artist's renderings and may contain options which are not standard on all models. Mattamy Homes reserves the right to make changes to these floorplans, specifications, dimensions and elevations without prior notice. Stated dimensions and square footage are approximate and should not be used as representation of the home's precise or actual size. Square footage of single family homes is generally based upon ANSI Z765-2003 but may vary from time to time and without notice. Square footage of multi-family homes are generally based upon ANSI BOMA Z65.1-1996 but may vary from time to time and without notice.



Destin III



Coastal



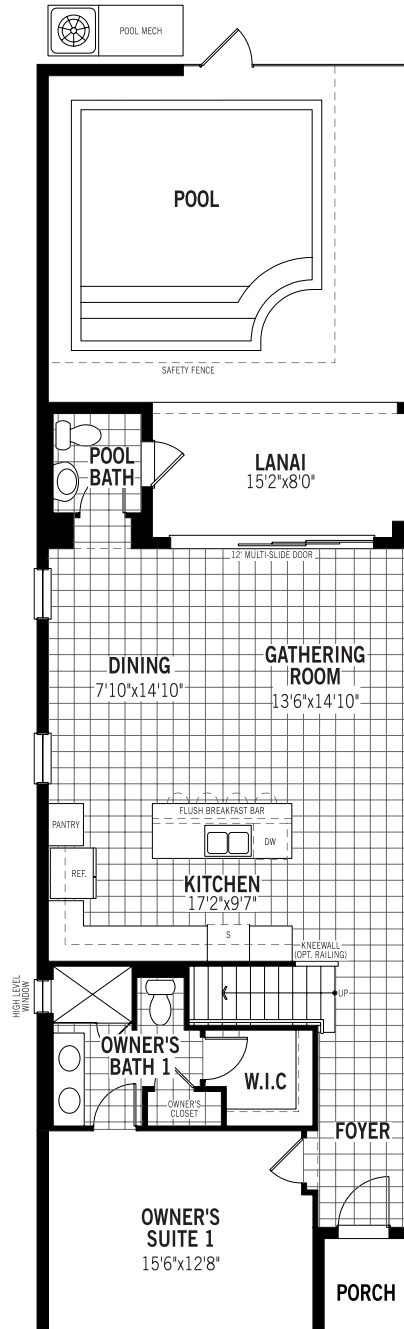
Modern

Printed on 8/30/23

Plans and elevations are artist's renderings and may contain options which are not standard on all models. Mattamy Homes reserves the right to make changes to these floorplans, specifications, dimensions and elevations without prior notice. Stated dimensions and square footage are approximate and should not be used as representation of the home's precise or actual size. Square footage of single family homes is generally based upon ANSI Z765-2003 but may vary from time to time and without notice. Square footage of multi-family homes are generally based upon ANSI BOMA Z65.1-1996 but may vary from time to time and without notice.



Destin III – First Floor



Printed on 8/30/23

Plans and elevations are artist's renderings and may contain options which are not standard on all models. Mattamy Homes reserves the right to make changes to these floorplans, specifications, dimensions and elevations without prior notice. Stated dimensions and square footage are approximate and should not be used as representation of the home's precise or actual size. Square footage of single family homes is generally based upon ANSI Z765-2003 but may vary from time to time and without notice. Square footage of multi-family homes are generally based upon ANSI BOMA Z65.1-1996 but may vary from time to time and without notice.



Destin III – Second Floor



Printed on 8/30/23

Plans and elevations are artist's renderings and may contain options which are not standard on all models. Mattamy Homes reserves the right to make changes to these floorplans, specifications, dimensions and elevations without prior notice. Stated dimensions and square footage are approximate and should not be used as representation of the home's precise or actual size. Square footage of single family homes is generally based upon ANSI Z765-2003 but may vary from time to time and without notice. Square footage of multi-family homes are generally based upon ANSI BOMA Z65.1-1996 but may vary from time to time and without notice.



Laguna III



Elevation Modern



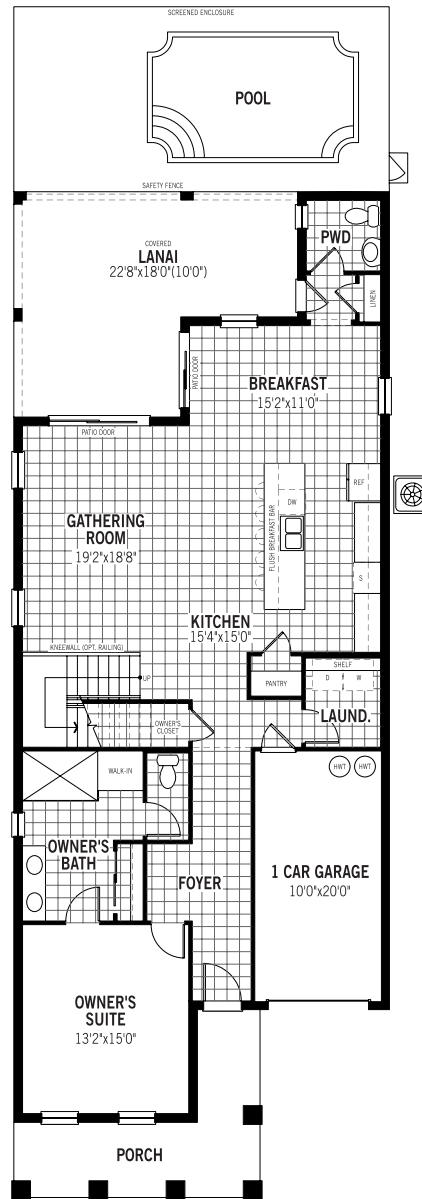
Elevation Coastal

Printed on 9/15/23

Plans and elevations are artist's renderings and may contain options which are not standard on all models. Mattamy Homes reserves the right to make changes to these floorplans, specifications, dimensions and elevations without prior notice. Stated dimensions and square footage are approximate and should not be used as representation of the home's precise or actual size. Square footage of single family homes is generally based upon ANSI Z765-2003 but may vary from time to time and without notice. Square footage of multi-family homes are generally based upon ANSI BOMA Z65.1-1996 but may vary from time to time and without notice. Revision: 10/11/2022



Laguna III - First Floor



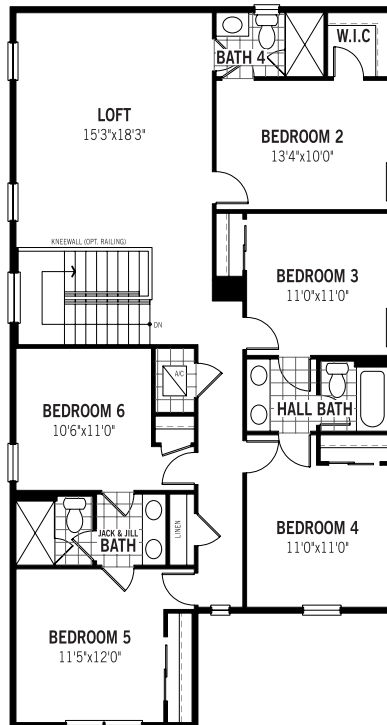
Unselected Options: Alternate Porch

Printed on 9/15/23

Plans and elevations are artist's renderings and may contain options which are not standard on all models. Mattamy Homes reserves the right to make changes to these floorplans, specifications, dimensions and elevations without prior notice. Stated dimensions and square footage are approximate and should not be used as representation of the home's precise or actual size. Square footage of single family homes is generally based upon ANSI Z765-2003 but may vary from time to time and without notice. Square footage of multi-family homes are generally based upon ANSI BOMA Z65.1-1996 but may vary from time to time and without notice. Revision: 10/11/2022



Laguna III - Second Floor



Printed on 9/15/23

Plans and elevations are artist's renderings and may contain options which are not standard on all models. Mattamy Homes reserves the right to make changes to these floorplans, specifications, dimensions and elevations without prior notice. Stated dimensions and square footage are approximate and should not be used as representation of the home's precise or actual size. Square footage of single family homes is generally based upon ANSI Z765-2003 but may vary from time to time and without notice. Square footage of multi-family homes are generally based upon ANSI BOMA Z65.1-1996 but may vary from time to time and without notice. Revision: 10/11/2022



Napa III



Coastal



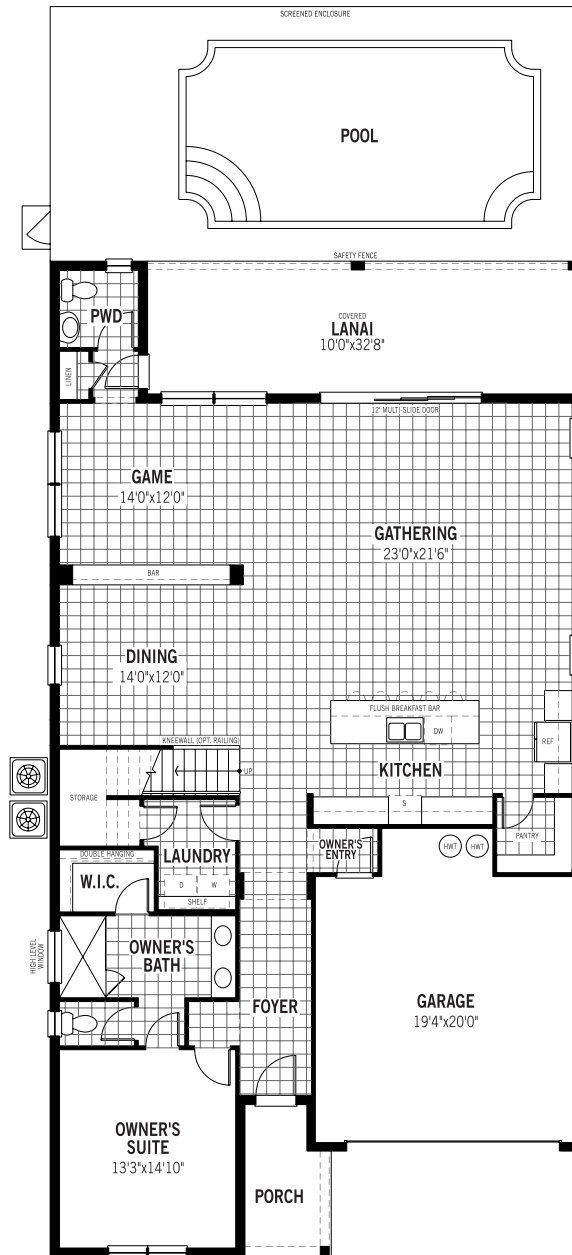
Modern

Printed on 9/7/23

Plans and elevations are artist's renderings and may contain options which are not standard on all models. Mattamy Homes reserves the right to make changes to these floorplans, specifications, dimensions and elevations without prior notice. Stated dimensions and square footage are approximate and should not be used as representation of the home's precise or actual size. Square footage of single family homes is generally based upon ANSI Z765-2003 but may vary from time to time and without notice. Square footage of multi-family homes are generally based upon ANSI BOMA Z65.1-1996 but may vary from time to time and without notice. Revision: 10/10/2022



Napa III - First Floor

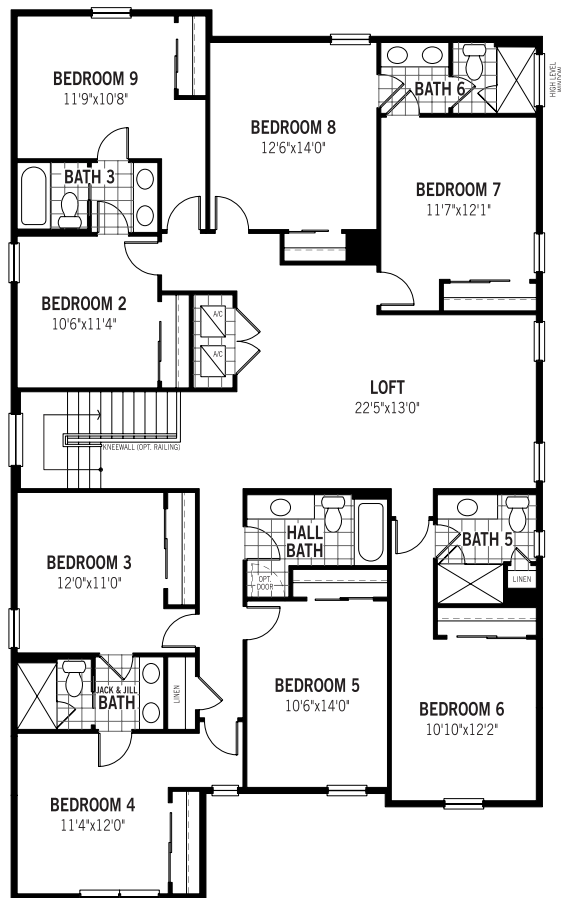


Printed on 9/7/23

Plans and elevations are artist's renderings and may contain options which are not standard on all models. Mattamy Homes reserves the right to make changes to these floorplans, specifications, dimensions and elevations without prior notice. Stated dimensions and square footage are approximate and should not be used as representation of the home's precise or actual size. Square footage of single family homes is generally based upon ANSI Z765-2003 but may vary from time to time and without notice. Square footage of multi-family homes are generally based upon ANSI BOMA Z65.1-1996 but may vary from time to time and without notice. Revision: 10/10/2022



Napa III - Second Floor



Printed on 9/7/23

Plans and elevations are artist's renderings and may contain options which are not standard on all models. Mattamy Homes reserves the right to make changes to these floorplans, specifications, dimensions and elevations without prior notice. Stated dimensions and square footage are approximate and should not be used as representation of the home's precise or actual size. Square footage of single family homes is generally based upon ANSI Z765-2003 but may vary from time to time and without notice. Square footage of multi-family homes are generally based upon ANSI BOMA Z65.1-1996 but may vary from time to time and without notice. Revision: 10/10/2022